

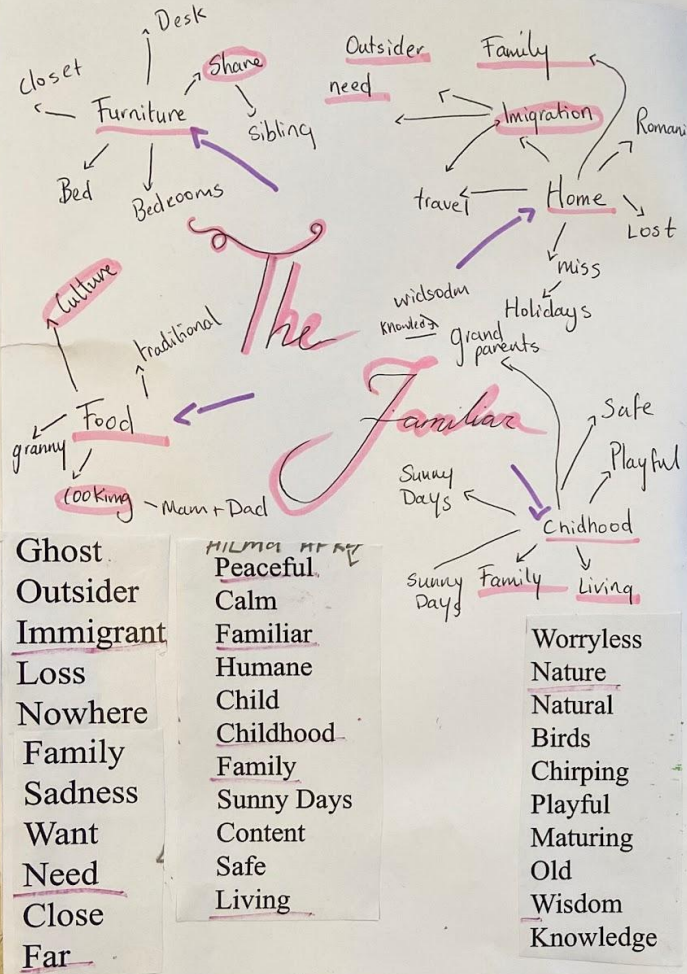
Visual Journal

With ANN-MARIE + AOIFE KEOGH



Visual Journal

Miss Filip



THE FAMILIAR LOUIS LE BROCCQUY

2. IRELAND AND ITS PLACE IN THE WIDER WORLD POST 1960S



Born

Ireland
November 10
1916

What

Painter

School

Trinity
College

Context - During the Cold war Ireland had an economic expansion with high records of employment. New music, literature and art was being produced and the traditional view was being torn down. Referendums on abortion laws and divorce brought up many social issues that Ireland were facing.



Painted being 1962, oil on canvas,
12x91cm High lane gallery

works with themes with
Family - x-rays from wife's
back, grief, loss.

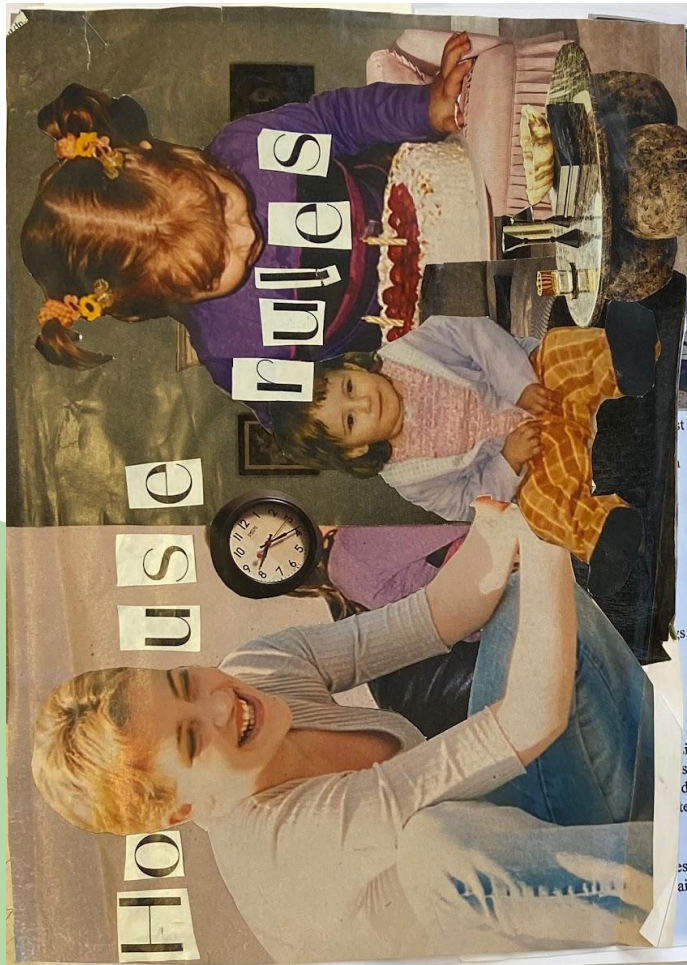
AEDP - Subjects and titles were deemed unimportant and experimentation was favoured for abstraction.

Media and Areas of practice - Acrylic art was introduced as budget friendly and printmaking was coming to a rise. Dripping, throwing, dilution and spraying were favoured techniques.

Innovation and invention - Abstraction was finally deemed as an acceptable art form of expression and new thinking was introduced.

Analysis - Based on X-rays from wife back. Balanced composition with figure in the middle. Grey blue tones with red marks in the middle. Smooth application with thick paint in the centre as it fades to the side giving a sort of host appearance.

Artists and Artwork - Lois studied chemistry at Trinity and spend years working in the family oil refinery business. Louis then went to study the old masters in Europe. A self taught painter he was a founder member of the Irish living art exhibition.



Context - Modernism started to enter Sweden art with Axel Törneman and then De unga. After World War II, Swedish art was in somewhat of a boom and a host of artists established themselves. With a new democratic idea in 1947 that art was founded for everyone, popular movements promoting art and in the same period also launched a variety of arts organizations across the country.

Part of **The Ten Largest** that celebrate ages of humanity - 3.28
×2.40 m / Oil on canvas



THE FAMILIAR HILMA AF KLINT



Born

Sweden
October
26 1862
...

What

Abstract
Painter

School

Royal
Swedish
Academy
of Arts



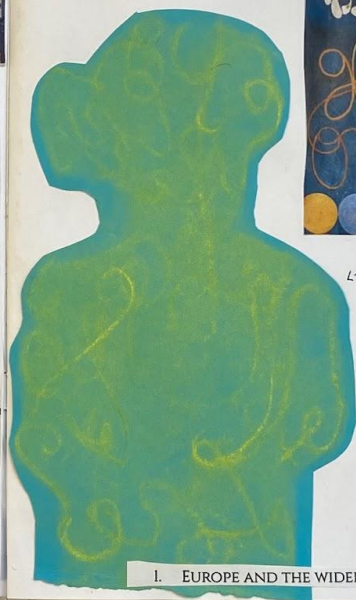
1. EUROPE AND THE WIDER WORLD (MODERNISM C. 1900 -1960S)



Context - Modernism started to enter Sweden art with Axel Törneman and then De unga. After World War II, Swedish art was in somewhat of a boom and a host of artists established themselves. With a new democratic idea in 1947 that art was founded for everyone, popular movements promoting art and in the same period also launched a variety of arts organizations across the country.

THE FAMILIAR HILMA AF KLINT

Part of **The Ten Largest** that celebrate ages of humanity - 3.28 x 2.40 m / Oil on canvas



Born

Sweden
October
26 1862

What

Abstract
Painter

School

Royal Swedish
Academy of Arts



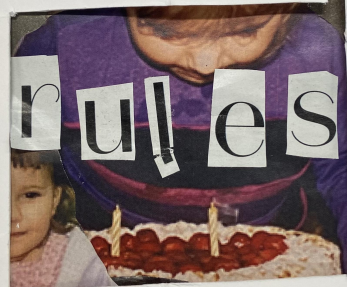
Artists and Artwork - Hilma was an unusual artist of her time. She chose to paint abstractly in a time where representative art was at the forefront. Through her beliefs and exploration with spiritualism she is known for her innovation of abstraction in the West.

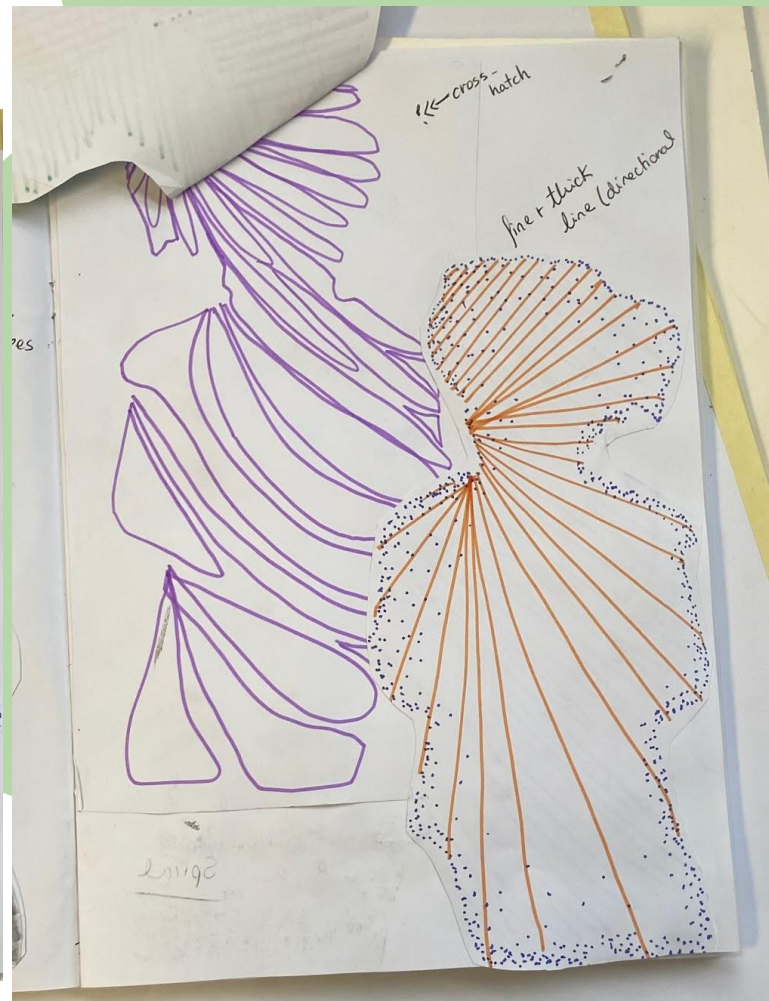
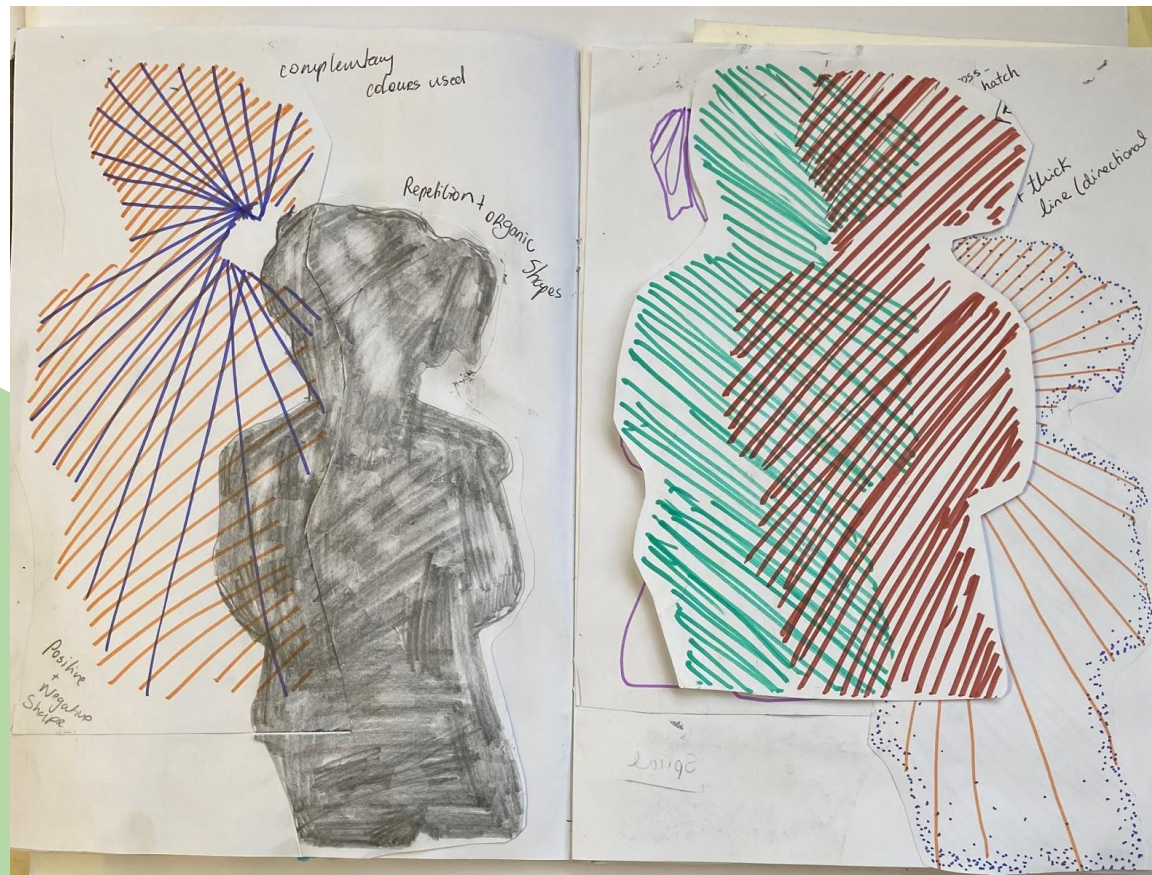
Analysis - Hilma is able to create a balanced abstract painting with the use of shape, line and colour. She is able to represent emotions and her spiritual beliefs through this thought out compositions. Her technical drawing skills are evident in the aesthetic paintings.

AEDP - Uses colour, line and shape to express emotions and feelings through thought out compositions using balance

Media and Areas of practice - Trained in classical drawing and painting techniques, Hilma used these to her advantage in her oil paintings. She categorized used careful perspective and composition to create aesthetic abstract oil paintings

Innovation and invention - Klint painted these abstract paintings even before known abstract painter Kandinsky.



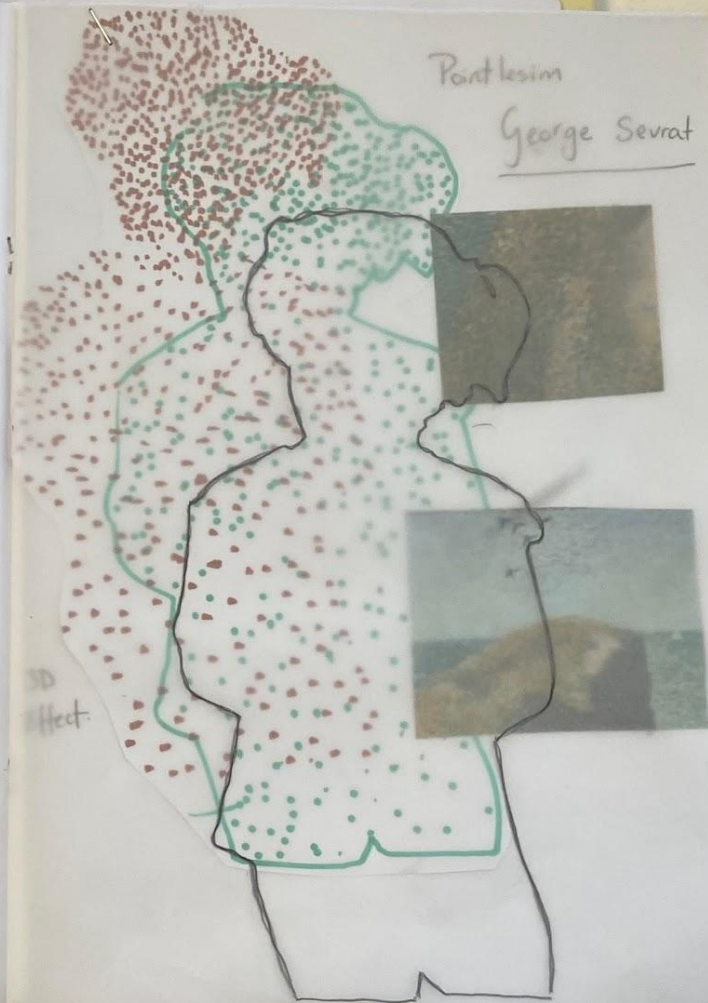




Hint
of
Kint

Continuous
line

Spiral



Pantlesim
George Seurat

3D
Effect.

Pattern
colour



Hint
of
Kint



Continuous
line

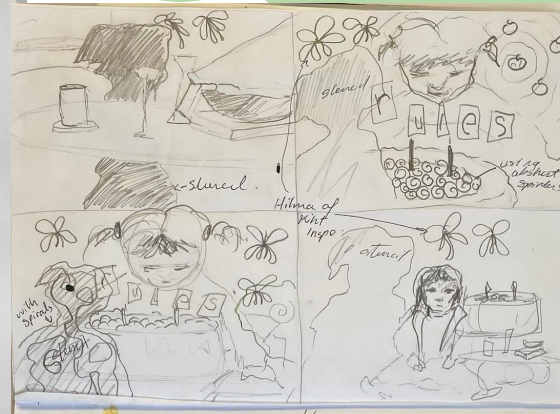
Spiral

Point lesim
George Seurat

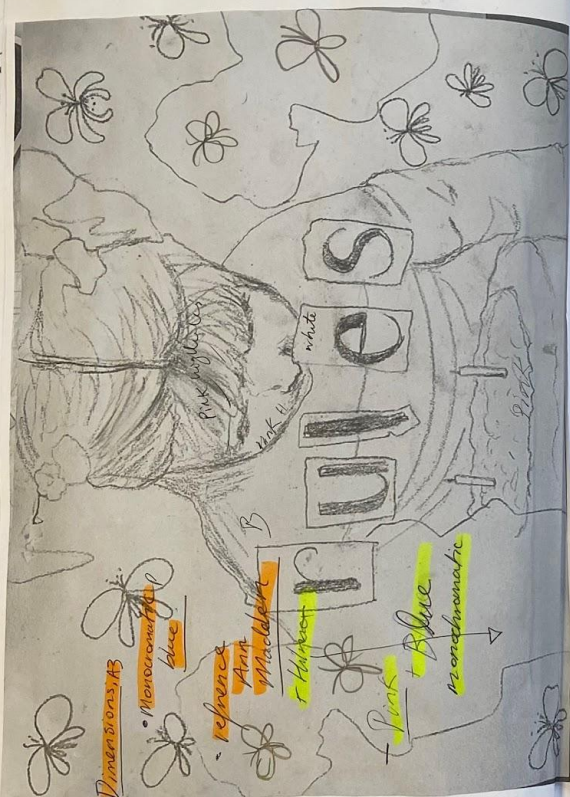


3D
Effect.





Final Proposal



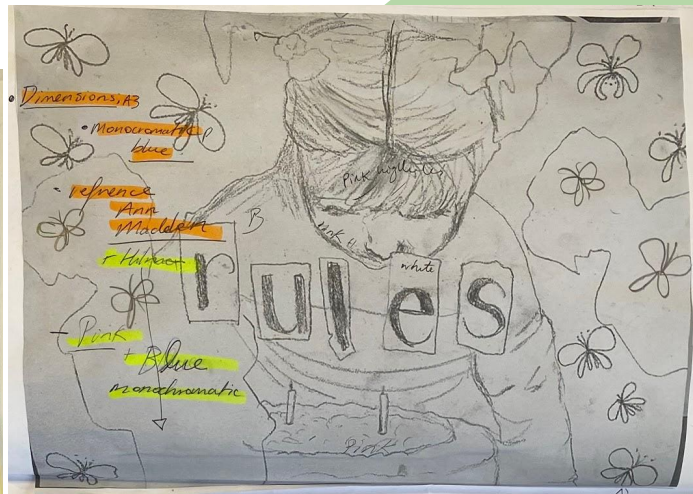
Le Brouy
Isolated



Ann MacLellan, Blue Monochromatic



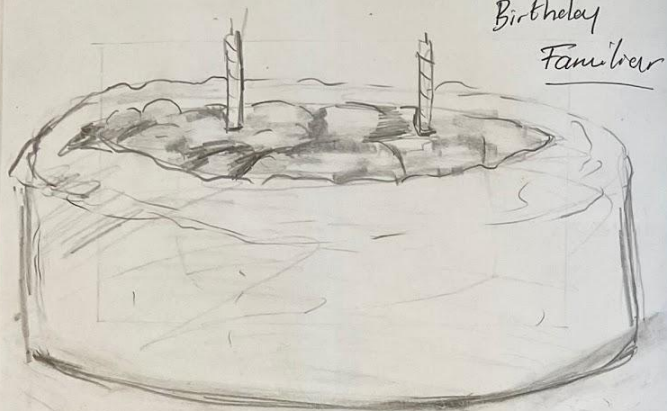
Night Gardens



Final Proposal

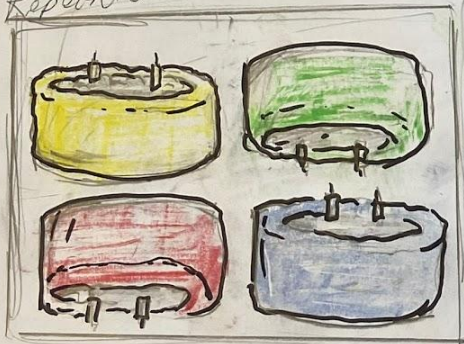
Idea for artefact B LINO

Artefact B Idea



Birthday
Familiar

Repetition



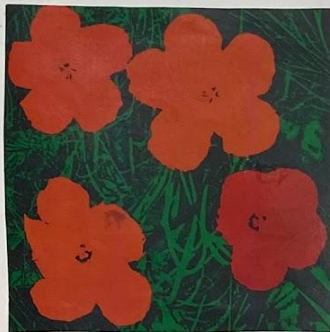
(Line)

Lino Idea

5 colours
layer
up
from
yellow

Colour

Elaine Sturtevant



Warhol Flowers 1969
silkscreen

Block colours
+ repetition

Appropriated Warhol's
artist's work

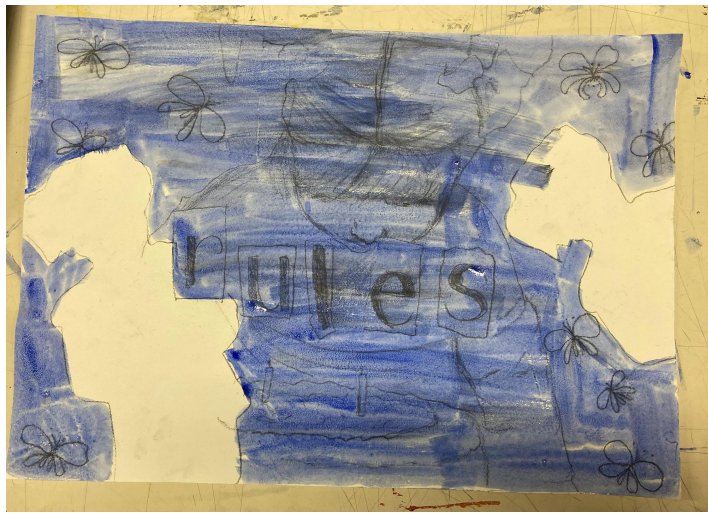
Artists Inspo

Andy Warhol



Marilyn Diptych

black
outline
Pop Art



Add Wash



Block In
Dark



Add in White + Mid tone

Final
Artefact A



Artefact A: Artist's Statement

Your work for Artefact A is based on your interpretation of your chosen theme. Reflect in the space below on how your work communicates your ideas.

I created this painting based on my theme Family. I decided to go on the route of family life and the domestic space. Hilma af Klint and Ann Madden along with Louis le Brocq were my inspiration for the style and content of my painting. I decided to do a monochromatic painting with blue and pink hues to reference Madden's Night Gardens. I choose this style as it set a mood to my painting. As a 1st generation Romanian Irish celebrations + birthdays can sometimes be blue due to my family being back home. Hilma's Ten Largest also inspired me to add in her motifs that reference childhood and the cycled life. I used Stenuis + acrylic paint to create my painting.

Artefact B: Artist's Statement

Your work for Artefact B is based on your interpretation of your chosen theme. Reflect in the space below on how your work communicates your ideas.

this allowed me to work in a fast pace: layering down quickly, which helped me create volume. The text is incorporated to give a child like feel and playfulness. For my artefact B I would love to create a final print based on the cake of my 2nd birthday. I will use repetition and a 'pop art' style referenced by Marilyn Warhol and Elaine Sturtevant. I want to bring emphasis to my birthday cake to hint back to my theme family. Or even a lack there off because of immigration. I will use 5 colours in total and create a bold outline as Warhol does in Marilyn Dick.

Remember your workbook and realised artefacts must not be removed from the school under any circumstances. All work must remain in the school and be kept secure until both the marking and appeal processes have finished.

Note: The circumstances in which the Minister for Education may withhold marks from candidates are set out in the 'Rules and Programme for Secondary Schools'. Any person who helps a candidate to break examination rules can be prosecuted under the Education Act 1998.